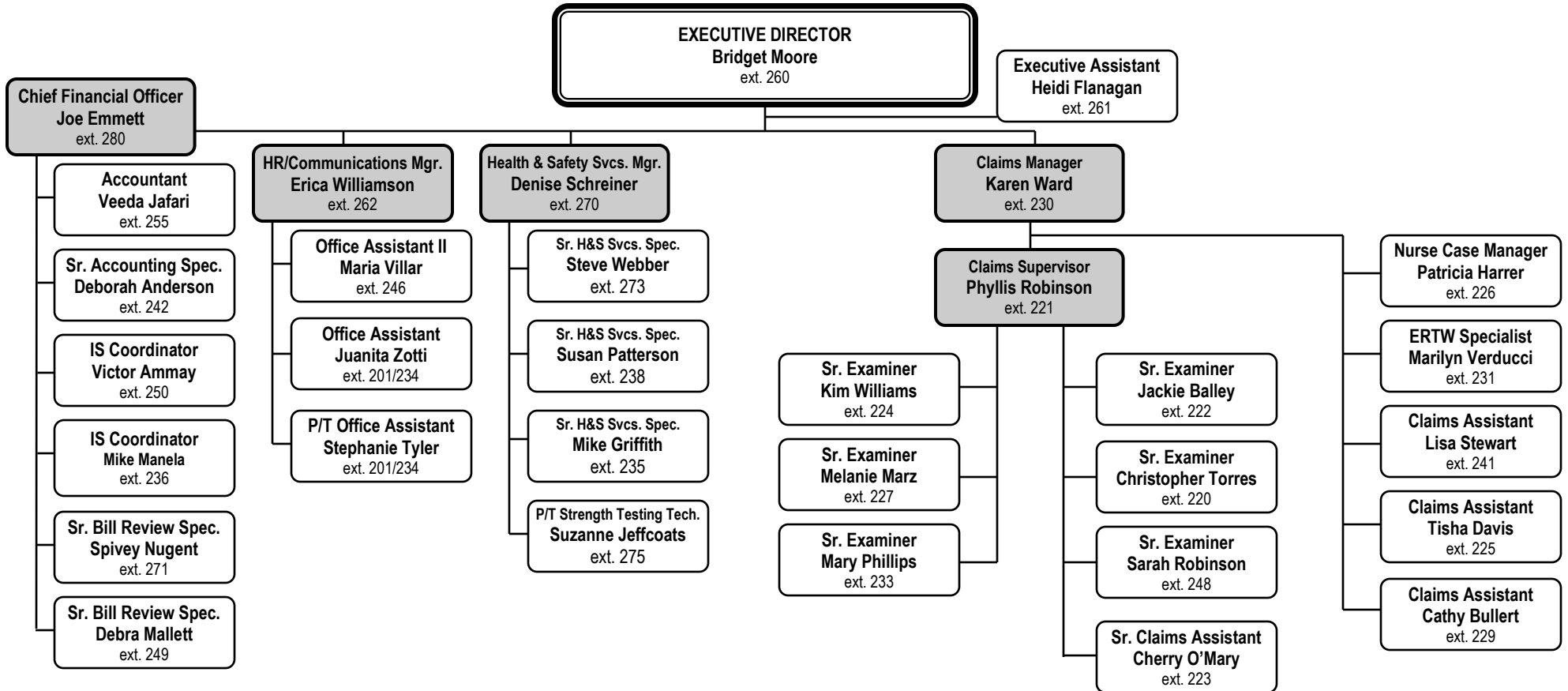




# CONTRA COSTA COUNTY SCHOOLS INSURANCE GROUP ORGANIZATIONAL CHART

## BOARD OF DIRECTORS

Acalanes, Antioch, Arcohe, Brentwood, Byron, Canyon, Castro Valley USD, CCCOE, CCCCD, John Swett, Knightsen, Lafayette, Liberty, Martinez, Moraga, Mt. Diablo, Oakley, Orinda, Pittsburg, San Ramon, Travis USD, Walnut Creek & West Contra Costa



*Effective April 17, 2018*

550 Ellinwood Way ~ Pleasant Hill ~ CA ~ 94523

Main Office: 1-866-9-CCCSIG ~ General Fax: 925-692-1137 ~ E-mail: (first initial) (last name)@cccsig.org ~ [www.cccsig.org](http://www.cccsig.org)

	Sr. Examiner/Examiner:	Claims Assistant:
<b>Acalanes Union High</b>	<b>Mary Phillips</b> Ext. 233	<b>Cathy Bullert</b> Ext. 229
<b>Antioch Unified</b>	<b>Christopher Torres</b> Ext. 221	<b>Lisa Stewart/Tisha Davis</b> Ext. 241/Ext. 225
<b>Brentwood Union</b>	<b>Mary Phillips</b> Ext. 233	<b>Tisha Davis</b> Ext. 225
<b>Byron Union</b>	<b>Mary Phillips</b> Ext. 233	<b>Cathy Bullert</b> Ext. 229
<b>Canyon School</b>	<b>Mary Phillips</b> Ext. 233	<b>Lisa Stewart</b> Ext. 241
<b>CC Community College</b>	<b>Mary Phillips</b> Ext. 233	<b>Tisha Davis</b> Ext. 225
<b>CCC Office of Education</b>	<b>Kim Williams</b> Ext. 224	<b>Tisha Davis</b> Ext. 225
<b>John Swett Unified</b>	<b>Mary Phillips</b> Ext. 233	<b>Lisa Stewart</b> Ext. 241
<b>Knightsen School</b>	<b>Kim Williams</b> Ext. 224	<b>Tisha Davis</b> Ext. 225
<b>Lafayette School</b>	<b>Kim Williams</b> Ext. 224	<b>Tisha Davis</b> Ext. 225
<b>Liberty Union High</b>	<b>Jackie Balley</b> Ext. 222	<b>Lisa Stewart</b> Ext. 241
<b>Martinez Unified</b>	<b>Mary Phillips</b> Ext. 233	<b>Tisha Davis</b> Ext. 225
<b>Moraga School</b>	<b>Kim Williams</b> Ext. 224	<b>Tisha Davis</b> Ext. 225
<b>Mt. Diablo Unified</b>	<b>Melanie Marz</b> Ext. 227	<b>Cathy Bullert</b> Ext. 229
<b>Oakley Union Elementary</b>	<b>Kim Williams</b> Ext. 224	<b>Tisha Davis</b> Ext. 225
<b>Orinda Union</b>	<b>Sarah Robinson</b> Ext. 248	<b>Cathy Bullert</b> Ext. 229
<b>Pittsburg Unified</b>	<b>Kim Williams</b> Ext. 224	<b>Tisha Davis</b> Ext. 225
<b>San Ramon Valley Unified</b>	<b>Jackie Balley</b> Ext. 222	<b>Lisa Stewart</b> Ext. 241
<b>Walnut Creek</b>	<b>Mary Phillips</b> Ext. 233	<b>Tisha Davis</b> Ext. 225
<b>West Contra Costa Unified</b>	<b>Sarah Robinson/Melanie Marz</b> Ext. 248/Ext. 227	<b>Cathy Bullert</b> Ext. 229

ALL DISTRICTS: Marilyn Verducci—Future Medical Low, Cherry O’Mary—Future Medical Medium